

MATH 24/124 CO-REQ COLLEGE ALGEBRA
Section 0106 – FALL 2024 MW 3:30-5:40 PM
Truckee Meadows Community College
Course Syllabus

MML Course ID burzynski28028

COURSE OBJECTIVES: This course presents topics in methods of solving linear, quadratic, polynomial, exponential equations and inequalities as well as methods of solving logarithmic equations. Also included are operations on matrices and solutions to systems of linear equations using matrices. Topics in sequences and series are also included. **NOTE:** This course does NOT serve as a prerequisite for MATH 127 nor is it sufficiently rigorous for entry into calculus.

PREREQUISITE: Math 96 with a grade of "C" or better

FALL 2024, Monday, August 26 through Thursday, December 11

SECTION 0106, 5 Credits,

INSTRUCTOR: Denny Burzynski

Email at dburzynski@tmcc.edu

Email me **only** through your Canvas account. I **cannot** reply to you through other accounts. Emails to me through your Canvas account assures me that it is actually you to whom I am replying.

TMCC Student Email

Once you are enrolled at TMCC, you will be assigned a TMCC email account. Your TMCC email is a key tool in your education; it is the primary communication method used by the College and your instructors to provide information about your classes and student account. Make plans to check it regularly to stay up-to-date on College news and class assignments.

Your TMCC Email Account

In order to ensure that all official information and communications from TMCC reach you via email and within [MyTMCC](#), TMCC has contracted with Google (via Gmail) to provide all students with an official [TMCC email account](#).

TMCC sends all official information to your TMCC email account, regardless of which email account you select in MyTMCC as your preferred email.

Your new student email address can be identified as: *username@mail.tmcc.edu*, where "username" is custom to you, and noted in your letter of acceptance. While attending TMCC, it is your responsibility to check your tmcc.edu email account regularly.

If you need assistance, please use the [self-service option](#) or contact TMCC's [online student support](#) to retrieve your username, reset your password or set your security questions.

OFFICE LOCATION: Classroom Vista 109

OFFICE HOURS: MW 3:00-3:25 PM: eMail me with questions you have. We can also answer questions you may have during class sessions.

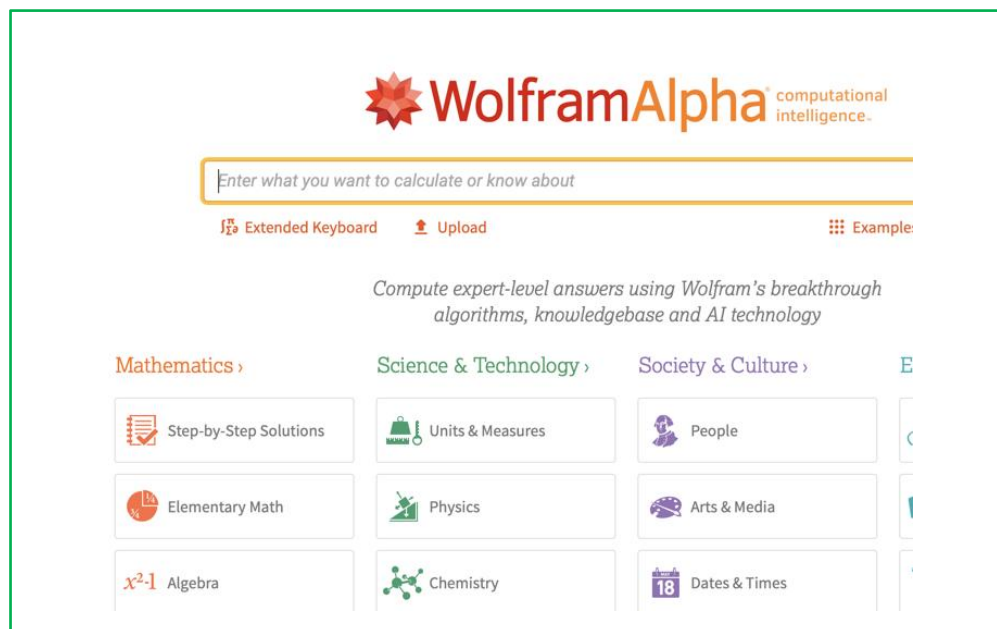
WEBPAGE: I have a webpage www.dennysmath.com

CALCULATORS: Although it may be expensive (\$100-\$125), the TI-83 or TI-84 graphing calculator from Texas Instruments is an exceptional tool for mathematical computations. I highly recommend the TI-84 Plus CE as it has all the functions we need. Other calculators will work, maybe just not as conveniently as the TI's (and your instructor probably does not know how to use it). **ALSO, a limited number of TI-84's are available to rent (\$25/semester) at the library circulation desk..** ← You don't need an 84 for the course, but you may find one helpful, especially when we got to the chapter on matrices. If you are going on to a Math 132 Finite Mathematics course, you find the TI-84 very useful. More details at [calculator rentals](#).

TECHNOLOGY: We will make significant use of technology, particularly the TI-84 Graphing Calculator, and the WolframAlpha (W|A) computational knowledge engine. I will show you how to use this. W|A is free. It is important that you be familiar with some technologies as many classes that require some mathematics will assume you can use it.

The technology we will use can be found at

www.wolframalpha.com



The textbook we will use is *College Algebra MyMathLab* from Pearson Publishing
ISBN 13 : 9780138251581

You will need ONLY the eBook

You Can Get a 14-Day MyMathLab Free Trial

Create a Pearson account

Or access your existing student account

Navigate to your MyMathLab course

Enter Course ID Our MML Course ID is

Our MML Course ID is burzynski28028

Follow a class link

Scroll to the bottom of the page

Select the link "Get temporary access without payment for 14 days"

Complete the process

Access your coursework

The eBook is all you will need. You do not need to purchase a hard-copy textbook for this course. You must, however, purchase a course ID to register into the MyMathLab system. The course ID is the only thing you will need to purchase for this course.

COURSE OUTLINE: In the eBook, we will cover, in this order, sections

Chapter 1	Graphs, Functions, and Models
Chapter 2	More on Functions
Chapter 3	Quadratic Functions, Equations & Inequalities
Chapter 4	Polynomial and Rational Functions
Chapter 5	Exponential and Logarithmic F
Chapter 6	Systems of Equations and Matrices
Chapter 8	Sequences and Series

ORGANIZED AND COMPLETE WORK: A main focus of this class is to show you how to construct and present convincing mathematical arguments. Right answers are good, but organization of your work is essential. On exams, you must show a logical sequence of steps that take one from the problem to the solution. Some problems are very simple and do not require much, if any, writing. But many require some description of how one would begin with the problem statement and, through a logical sequence of steps, arrive at a solution. On non-elementary problems, you must show your work. No work, no credit. To receive full credit for problems on an exam, your work must be readable, organized, logical, and correct.

CELL PHONES: Turn them off when you come into class.

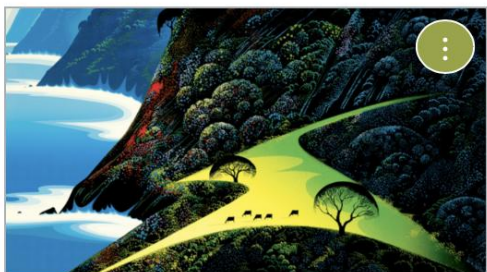
CANVAS WEB PAGE: <https://tmcc.instructure.com/login/ldap>

Find help at [How do I get help with Canvas as a student?](#)

User Name: Your 10-digit NSHE ID

Password: Use the same password as you use to log into MyTMCC.

Your Canvas page may look like this. **Our information will be in the Math 24/124 folder.**

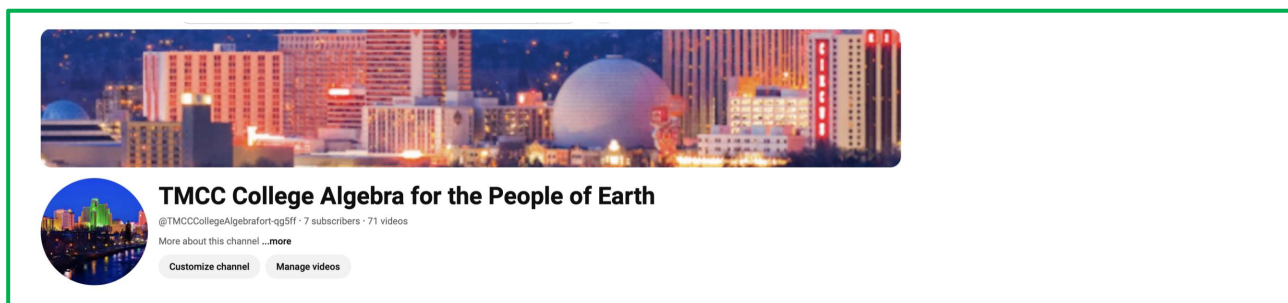


Fa24MATH24_0106_P, Learning Support for

YOUTUBE Videos: I have created videos and posted them on a YouTube channel. The videos show me working problems from our exercises sets. The problems in the MML Homework sets are similar (just different numbers) to the exercises in the textbook. I have tried to post examples that match the MML Homework problems. The videos are not the most exciting, but they just may help you through a problem.

The YouTube channel name is

[TMCC College Algebra for the People of Earth](#)



10% of your course grade comes from the homework. The HW score is worth 100 points
You earn 100 points if you score 80-100% on the HW
You earn 75 points if you score 60-79% on the HW
You earn 50 points if you score 40-59% on the HW
You earn 25 points if you score 20-39% on the HW
You earn 0 points if you score less than 20% on the HW

I really² recommend doing all or most of a HW set every day. The problems take some thought, and, waiting to the last day could cause you some stress.

You can bring and refer to your worked-out HW problems to each exam.

EXAMS: We will have an exam about every 3rd Wednesday.

Exam 1: Wednesday, September 11

Exam 2: Wednesday, October 2

Exam 3: Wednesday, October 23

Exam 4: Wednesday, November 13

Exam 5: Monday, December 9 (4th week from Exam 4)

Grades are based only on exam scores, homework assignment scores, the technology assignment Scores. The final exam is NOT comprehensive, it will cover only the material after Exam 4.

There is a total of 250 exam points.

You may use your notes and homework on the exams. Each exam is valued at 50 points.

There will be **NO MAKE-UP EXAMS**. The lowest exam score or a missed exam will be replaced with the average (mean) of all the exam scores (with the exception of the final exam).

The answers to each exam will be posted in the Files folder on CANVAS soon after the exam.

Exams will be returned the next class meeting.

You can use your notes and homework as references on the exams. Organize them.

COMPUTATION OF COURSE GRADE:

Course percentage

= $0.80 * (\text{exam total}) + 0.10 * (\text{homework score}) + 0.10 * (\text{technology assignments score})$

GRADING: Grading will be done on a percentage basis.

90%-100%: A

85%-89.99%: B+

78-84.99%: B ← That's right, B's go down to 75%

70-77.99%: C+

68%-69.99%: C

55%-67%: D

Below 55%: F

HOW THE COURSE WORKS

Try reading the material in the textbook. Just try it. I know math textbooks can be challenging to read. Watch a presentation of the topic on our YouTube channel. Watch the example videos on our YouTube channel to see how I approach and solve the problems. Try the homework problems that are listed in the Homework Exercise sheet on Canvas. If you just can't work something out, send me an email ONLY through Canvas. Tell me the exercise number you are struggling with. If you do get stuck, you might first look for a video that is similar to your particular problem. I have tried to make videos that match just about every HW problem in the list.

Original Work: All work must be your own. Cheating on an exam will result on a "0" grade for that exam and that exam will not be one that is replaced with the lowest exam score. TMCC notes its policy on academic dishonesty in the College Catalog. Generally, TMCC does not tolerate scholastic dishonesty and will prosecute offenders to the fullest extent it can. Please read and understand

TMCC's academic dishonesty policy in the current College Catalog. Students' rights and responsibilities regarding academic dishonesty are outlined in the TMCC academic integrity policy, which can be found in the [college catalog](#).

Syllabus Disclaimer: The instructor may make changes to the syllabus during the semester. It is your responsibility to stay informed of these changes. You may contact the instructor during before/after class, time permitting. You may also wish to have a study partner whom you can contact if you miss class. Information contained in this syllabus, other than the policies on grading, late assignments and late exams, make-up work, and attendance, are subject to change with advance notice from the instructor.

Chronological Calendar for Fall 2023

- Monday, 8/26: First day of Instruction and first day of our class
- Friday, 8/30: Last day to add full-semester class by 11:59 pm
- Monday, 9/2: Labor Day Holiday, the campus is closed
- Thursday, 10/24: Last day to change to Audit
- Thursday, 10/24: Last day to withdraw from full semester classes and receive W grade
- Friday, 10/25: Nevada Day Holiday, the campus is closed
- Monday, 11/11: Veterans Day, the campus is closed
- Thursday-Sunday, 11/28-12/01, Thanksgiving Break, the campus is closed
- Monday, 12/9: Our final exam and Last day of our class